

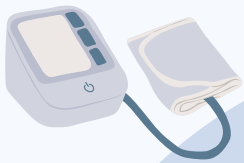
PRIMARY CARE NETWORK  
Higher Blackley,  
Harpurhey &  
Charlestown

NHS

# ENHANCED ACCESS SERVICE

Your GP practice is part of the Higher Blackley, Harpurhey and Charlestown Primary Care Network. This involves a group of practices working together to make sure you can access a range of healthcare services at a time and place that meets your needs.

## Accessing the service



Enhanced Access Service appointments are available Monday to Friday between 6.30pm and 8pm, and Saturdays between 9am and 5pm.

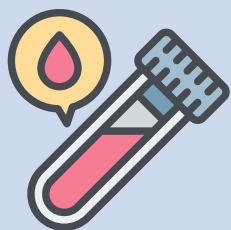
**You can book an appointment by calling 07745179348 or via your GP practice. This number is for appointment bookings and cancellations only and is open Monday to Friday between 9am and 4pm.**



The Enhanced Access Service does not offer a walk-in service.

If you cannot attend your appointment, it is important that you let us know as soon as possible via 07745179348 so we are able to offer the appointment to another patient.

**All appointments are held at The Avenue Medical Centre, 51-53 Victoria Avenue, Blackley, Manchester, M9 6BA.**



If you would like to receive this information in another language or format such as large print, Braille or audio, please email [gmicb-mh.h2c-enquiries@nhs.net](mailto:gmicb-mh.h2c-enquiries@nhs.net).

[gmicb-mh.h2c-enquiries@nhs.net](mailto:gmicb-mh.h2c-enquiries@nhs.net)



[hblackleyharpurheycharlestown-pcn.co.uk](http://hblackleyharpurheycharlestown-pcn.co.uk)



For more information scan the QR code.



@H2C\_PCN



@H2CPCN



Higher Blackley, Harpurhey & Charlestown PCN

